

CLIMOGRAPH worksheet

VOCABULARY

climograph – A graph that shows the annual (yearly) cycle of temperature and precipitation for a geographical location.

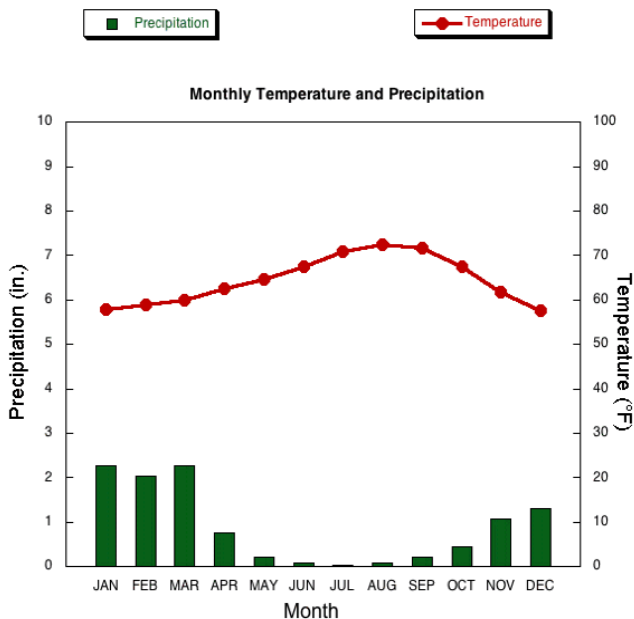
climate – The average weather conditions prevailing in an area over a long period of time.

weather - The state of the atmosphere at a place and time with regard to temperature, cloudiness, dryness, sunshine, wind, rain, etc.

DIRECTIONS: Use the following *climographs* to answer each of the related questions.

Annual Climatology: San Diego, CA (SAN)

Elev: 13 ft Lat: 32° 44'N Long: 117° 10'W



Annual Climatology: _____ , _____

Elev: 597 ft Lat: 41° 52'N Long: 87° 37'W

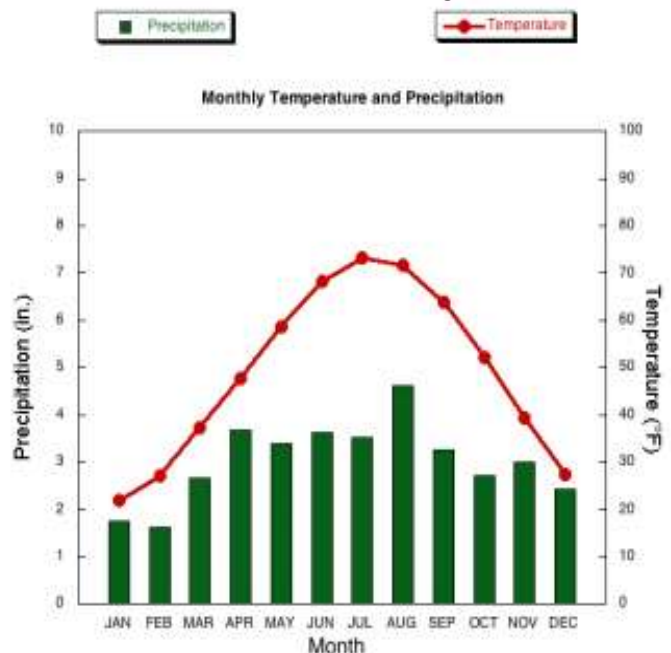


Figure 1: Average Temperatures and Precipitation 1971-2000. (NCDC Data)

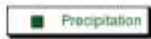
- 1) The data used for the *climograph* of San Diego, CA. was collected over how many years?
- 2) Approximately how many inches of precipitation does San Diego get in January?
- 3) In which month would you be least likely to need an umbrella in San Diego?
- 4) Approximately how many inches of precipitation fall in San Diego during an entire year?
- 5) Which month has the highest average temperature in the “mystery city”?
- 6) What is the average temperature in the “mystery city” during its hottest month?
- 7) What is the average temperature in the “mystery city” during its coldest month?
- 8) What is the temperature difference between the hottest month and the coldest month in the “mystery city”?
- 9) What is the temperature difference between the hottest and coldest months in San Diego?
- 10) Does it ever snow in the “mystery city”? Explain your answer using information from the *climograph*.

Use your atlas and the listed coordinates to identify the “mystery city” on this page.

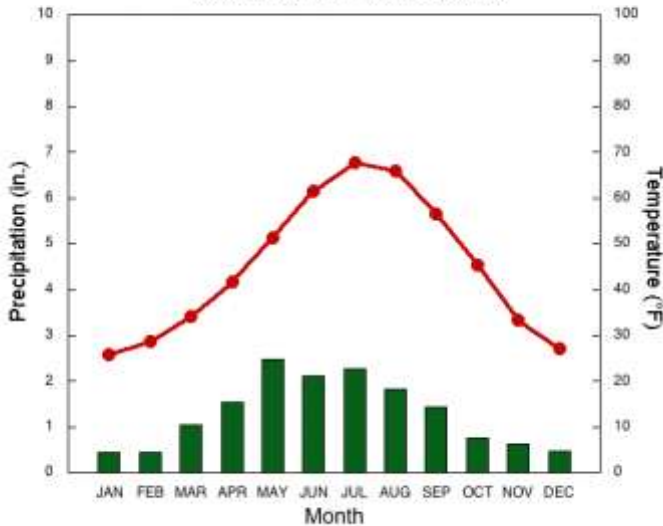
DIRECTIONS: Use the following *climographs* to answer each of the related questions

Annual Climatology: _____ , _____

Elev: 6062 ft Lat: 41°8' N Long: 104°48' W

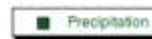


Monthly Temperature and Precipitation

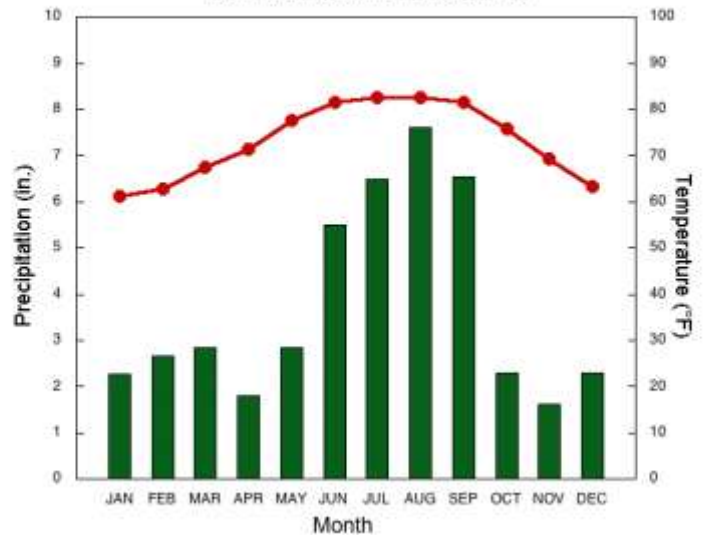


Annual Climatology: _____ , _____

Elev: 48 ft Lat: 27°56' N Long: 82°27' W



Monthly Temperature and Precipitation



Use your atlas and the listed coordinates to identify each of these cities.

- 1) Which city has the most precipitation during the year?
- 2) How many inches of precipitation fall in this city during an average year?
- 3) For the city on the right, list the type of clothes you would want to have in your closet to wear anytime?

- 4) Explain what type of clothes you **NOT** waste your money buying if you planned on living in the city on the right?

- 5) In which city would you expect it to rain during your 4th of July barbecue?
- 6) In which city would your dreams of having a “white snowy Christmas” most likely come true?
- 7) Explain your answer to question #6 using the information from the *climograph*.

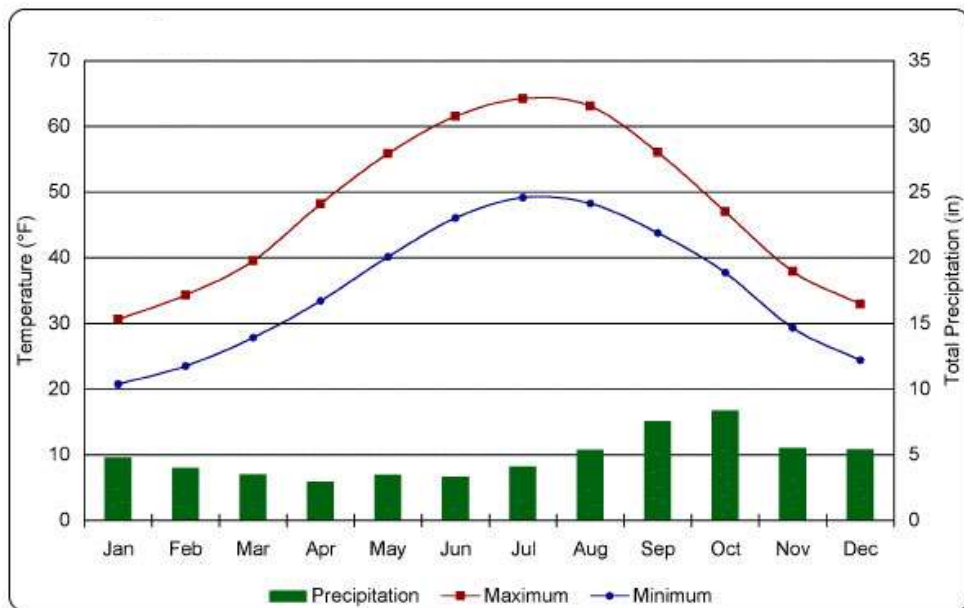
- 8) After studying the climates of these four cities – San Diego, Chicago, Cheyenne and Tampa – explain which city you would most like to move to and the reasons why.

DIRECTIONS: Use the following *climographs* to answer each of the related questions

Use your atlas and the listed coordinates to identify each of these cities.

Annual Climatology: _____, _____

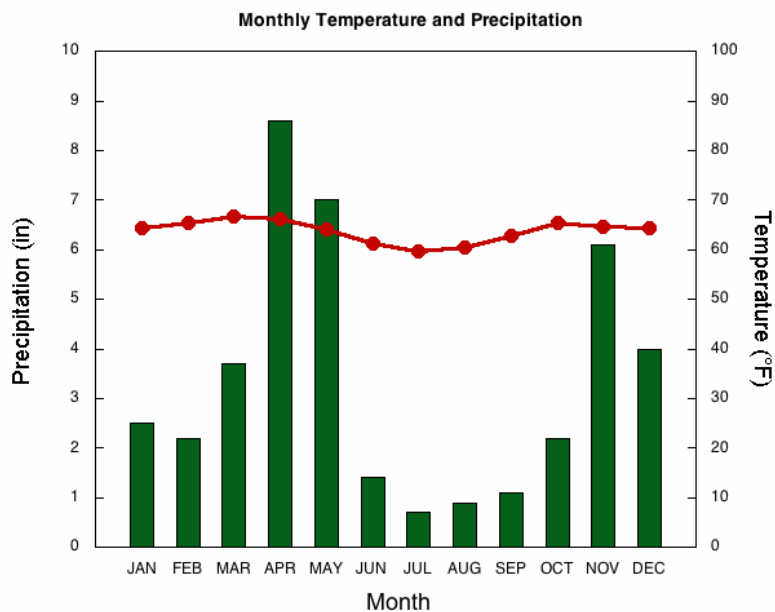
Elev: 56 ft Lat: 58°26' N Long: 134°13' W



- 1) Explain how this *climograph* is different from all the others you have looked at.
- 2) During which months of the year could you grow a vegetable garden in this city?

Annual Climatology: _____, _____

Elev: 5450 ft Lat: 1°17' S Long: 36°49' E



- 3) Which one of these cities has the most precipitation in the month of December?
- 4) Which one of these cities is in the *tropics*?
- 5) Give **two (2)** reasons why you know this city is in the *tropics*.

- 6) During which season (winter, spring, summer or fall) would it be the **best time** to plant crops in this climate? Explain your answer.

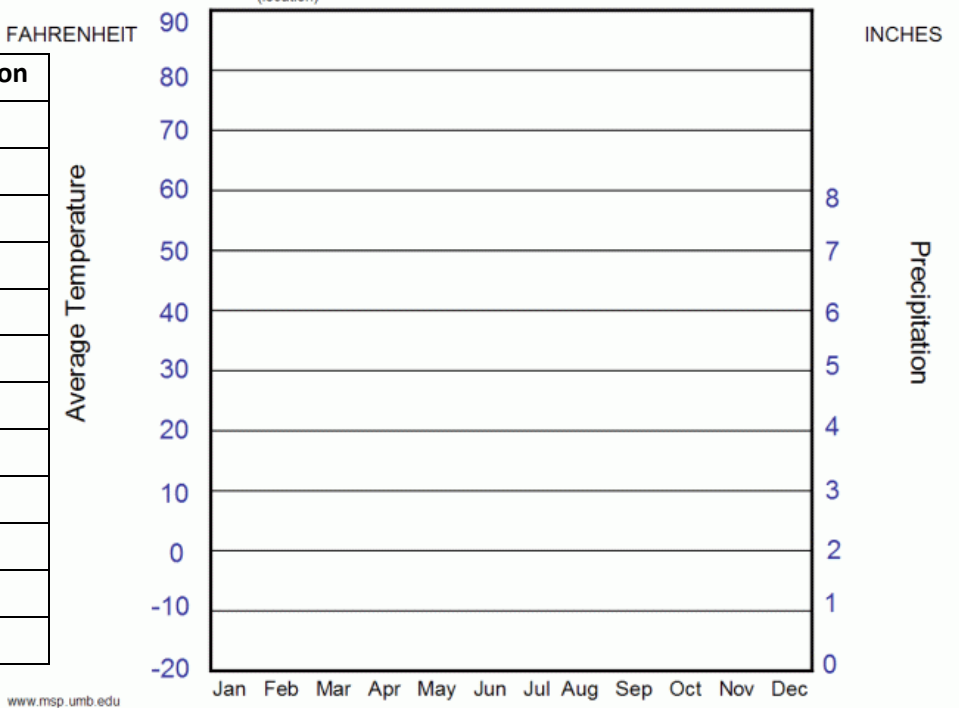
CREATE YOUR OWN CLIMOGRAPH!

Directions: Use the statistics on precipitation and temperature in each table to create a *climograph* for each city in the blank graph. Use the examples you used if you need help.

Elev: 118 ft Lat: 32°47' N Long: 79°56' W

	Temperature	Precipitation
January	48 degrees	3.5 inches
February	51	3.5
March	58	4.5
April	65	3
May	73	4
June	78	6.5
July	82	7
August	81	7
September	76	5
October	67	3
November	58	2.5
December	51	3

Climograph for: _____
(location)



Elev: 4751 ft Lat: 38°56' N Long: 119°44' W

	Temperature	Precipitation
January	32 degrees	1.5 inches
February	37	1.2
March	42	1.1
April	47	.3
May	54	.5
June	63	.4
July	69	.2
August	68	.3
September	61	.4
October	50	.6
November	40	1
December	32	1

Climograph for: _____
(location)

